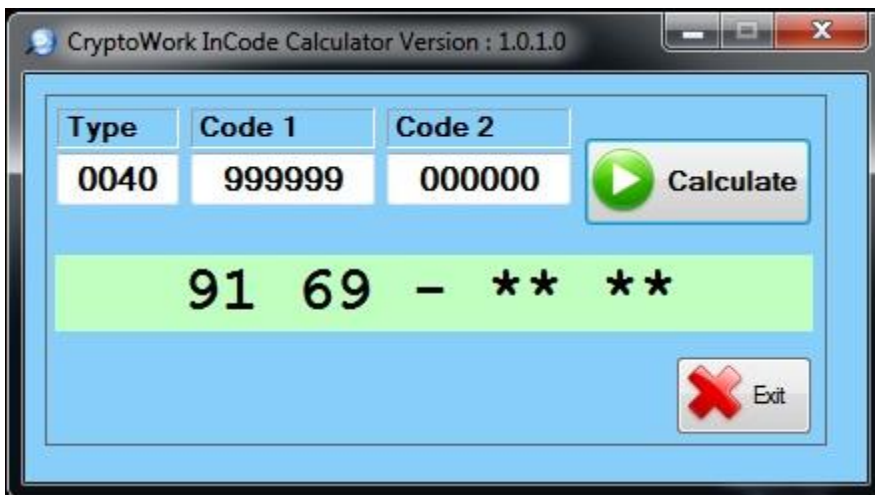
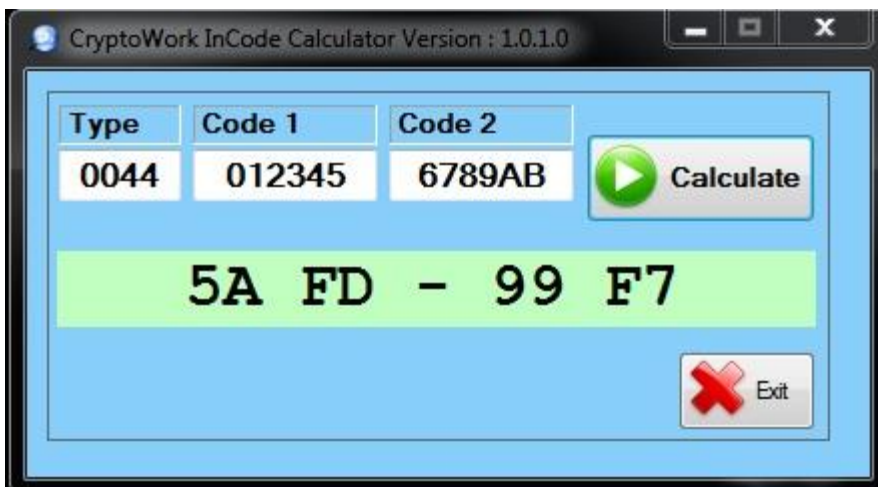


Cryptowork Incode-Outcode Calculator User Guide

The old algorithm starts with 00 in the Ford brand vehicles,
like 0044-012345-6789AB or 0040-999999-000000...

Calculation program solves accurately the old algorithm that is until 2011...

You have enter the this code in calculator and simply press the calculation key...

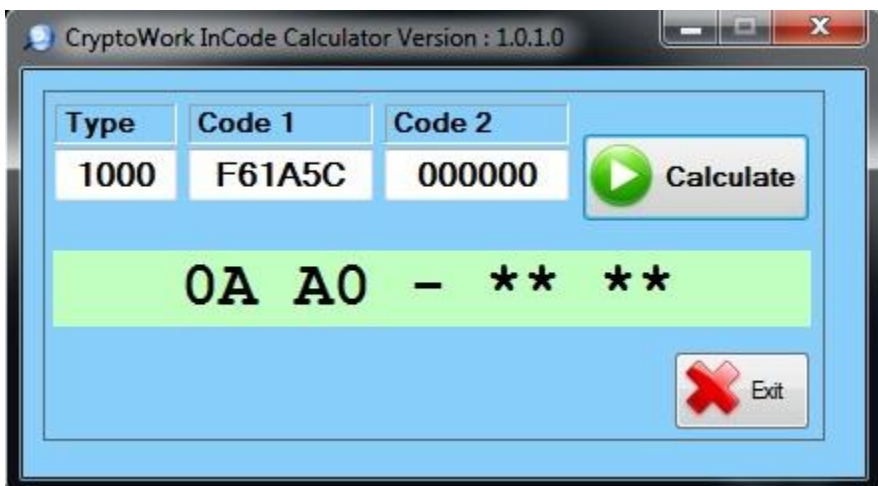
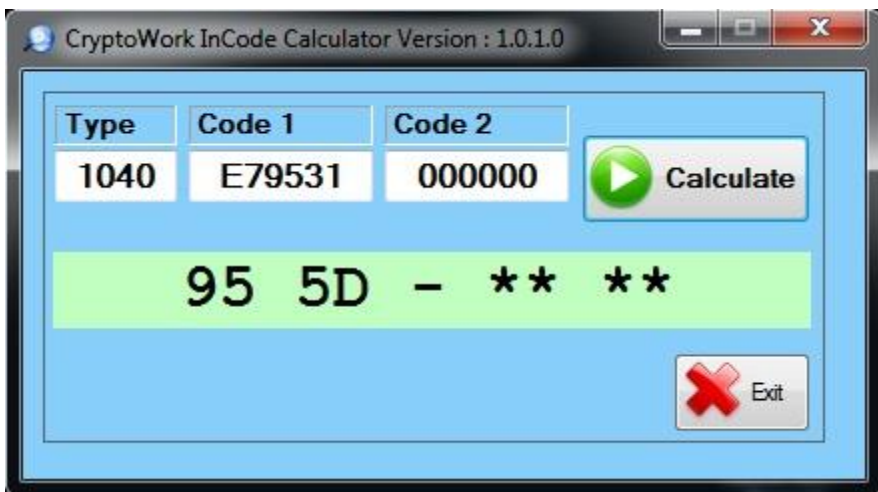
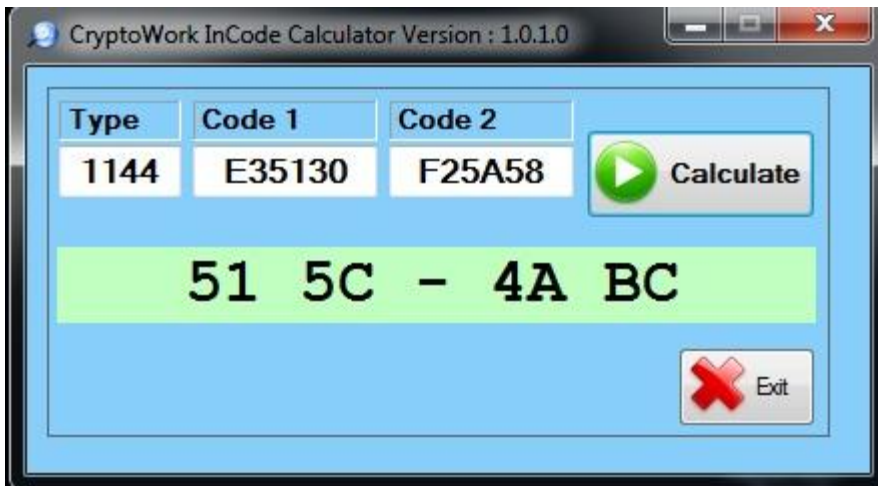


This program will be given free for everyone...

People who sign in to on our website, can download and use the program for free from program download section...

The NEW algorithm starts with 01,02,10,20,30,40,50,60,70 in the ford brand vehicles...

like 1144-E35130-F25A58, 1040-E79531-000000 or 1000-F61A5C-000000

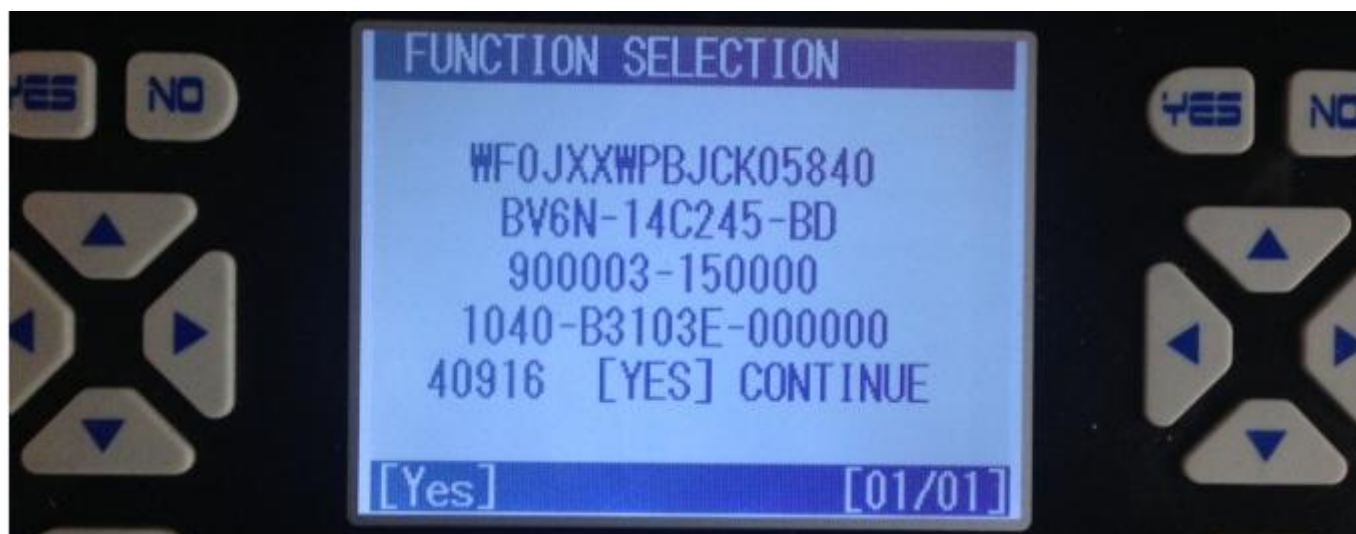
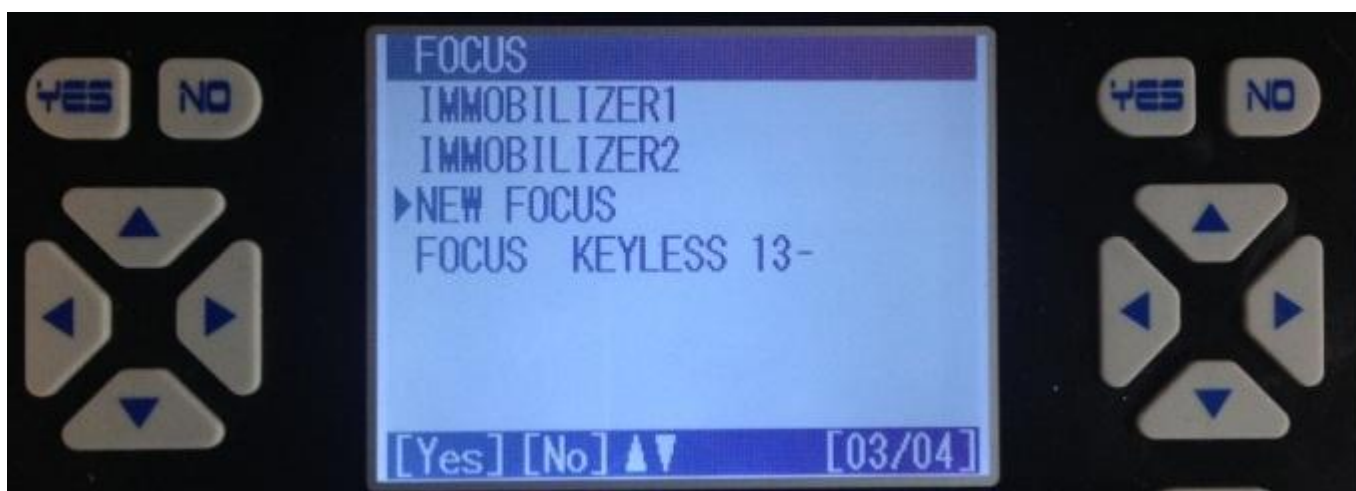


Cryptoworks program needs to communicate and find the code for relevant unit by connecting the vehicle for this program to calculate fords that has after 2011 new generation algorithms...

You can also use other devices to make transactions with this coding

You can find a detailed description in the following example...

The First Step :



The Second Step :

The procedures for BCM, respectively;

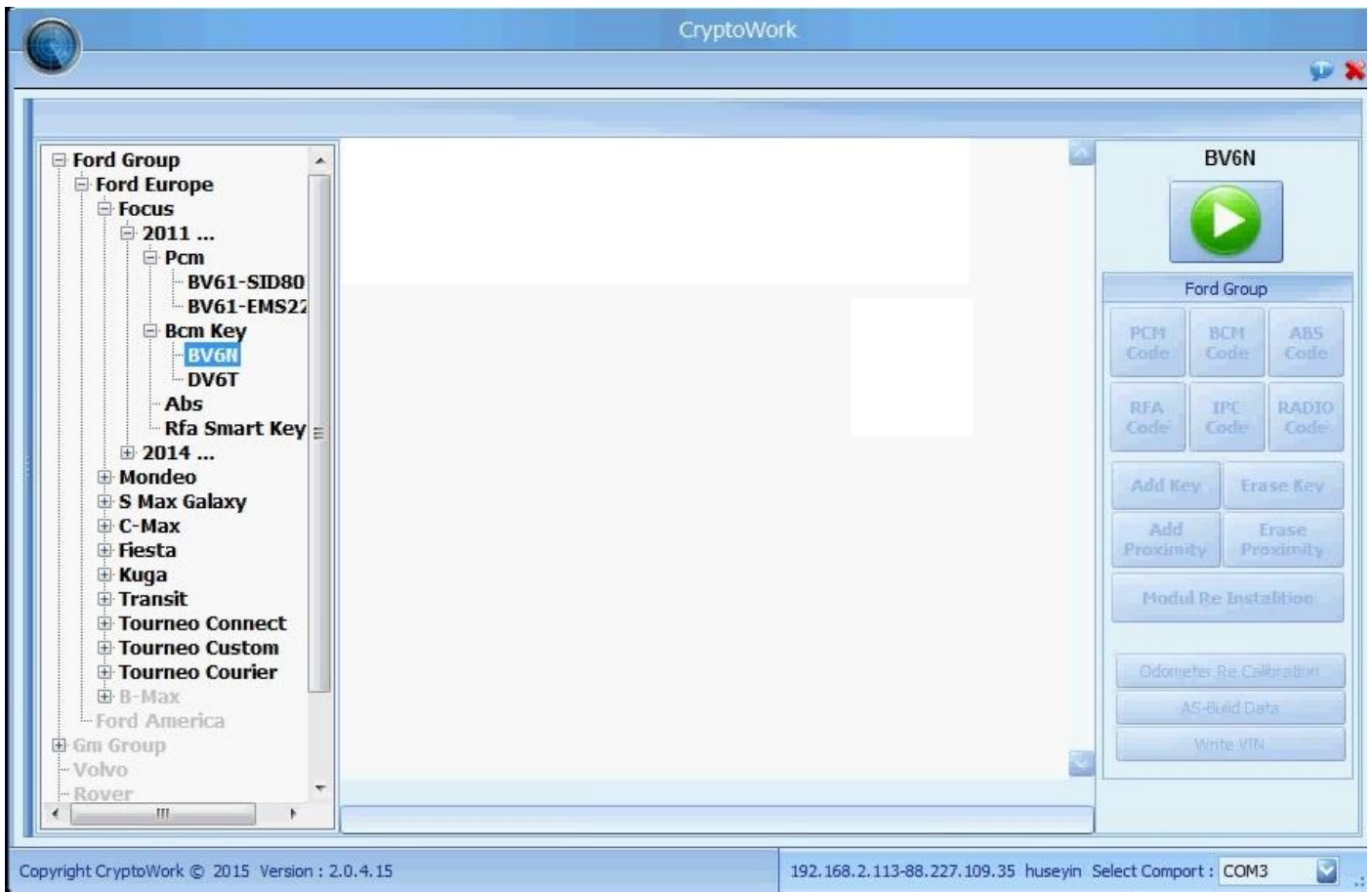
FORD GROUP

FORD EUROPE

FOCUS2011

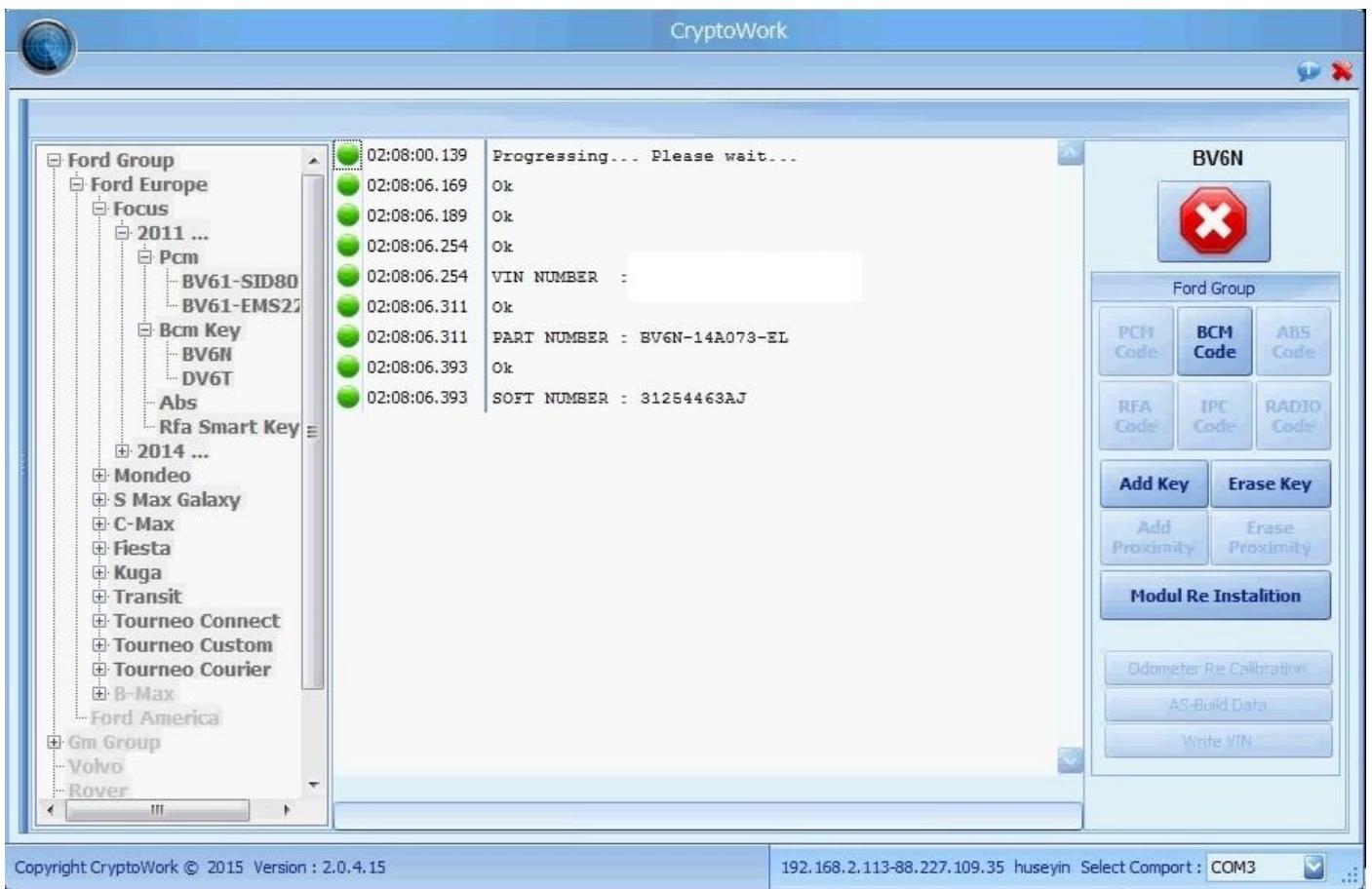
BCM KEY

BV6N select..

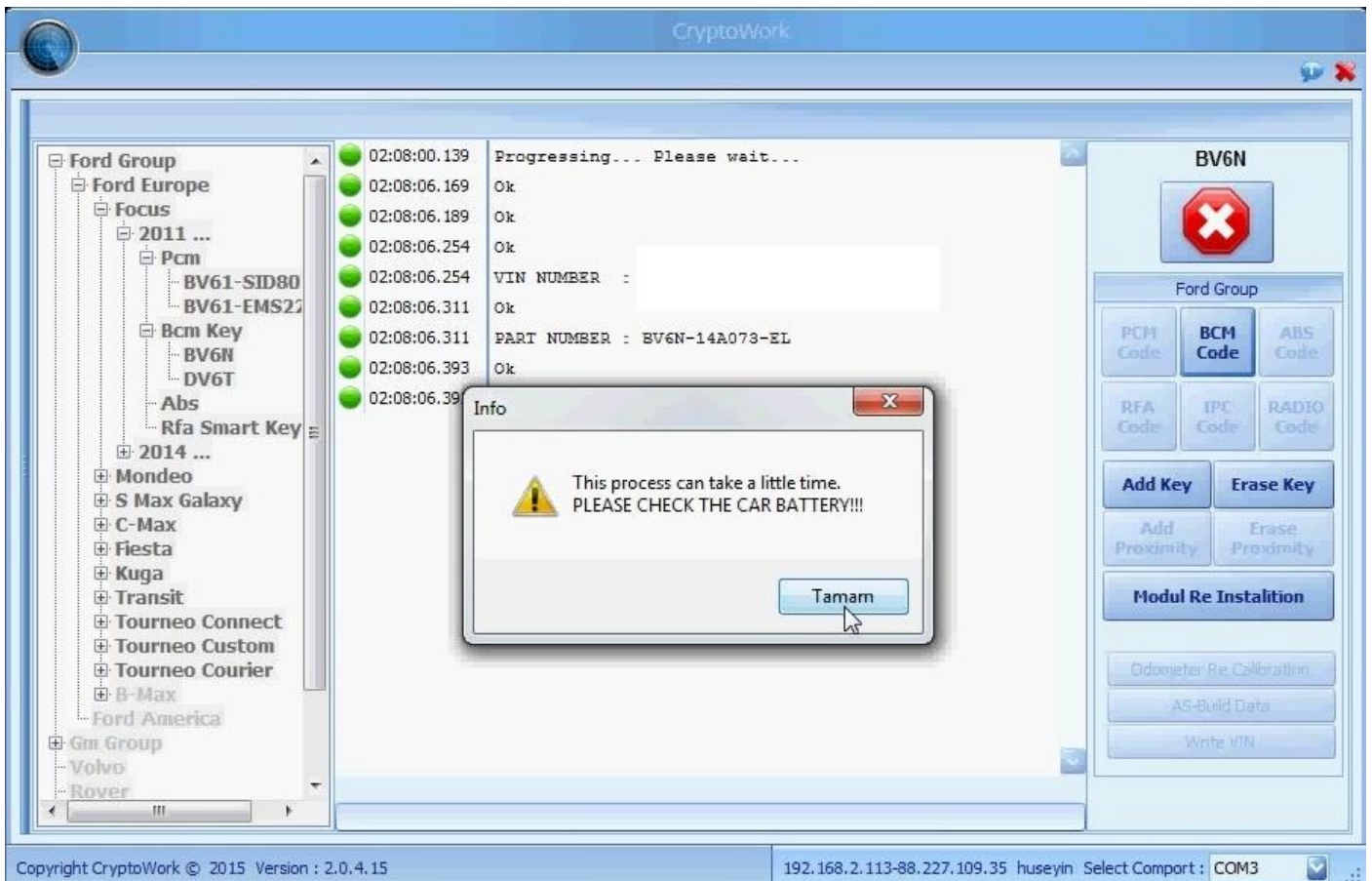


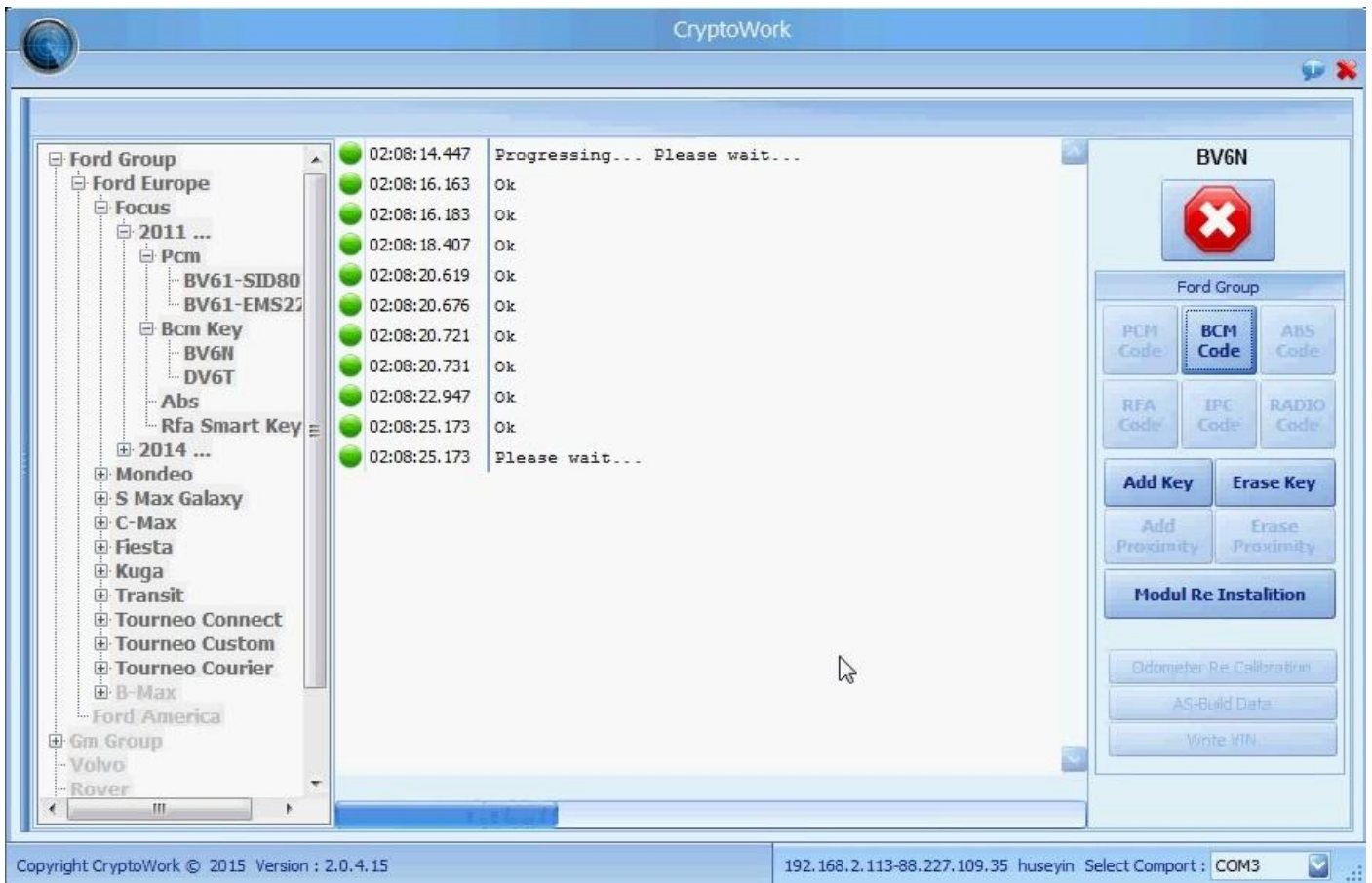
Press the  on the right

After the connection is established, you will see the information of the vehicle on the main screen.

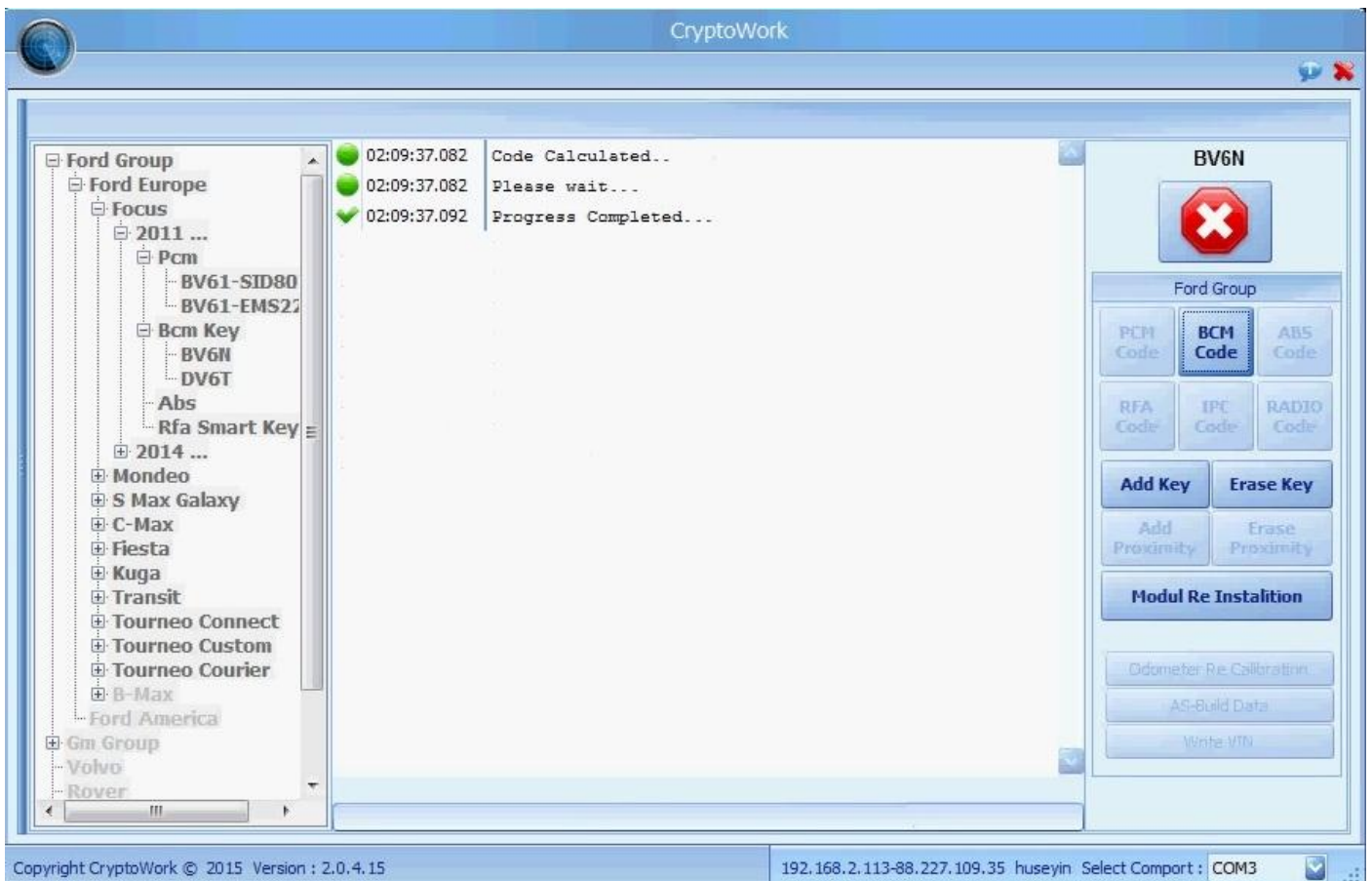


After the connection occurs, press the BCMCODE on the left side.

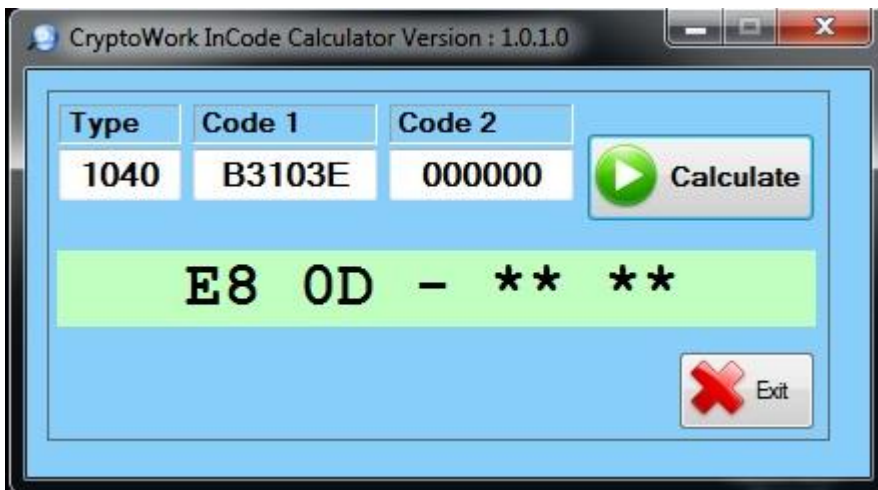
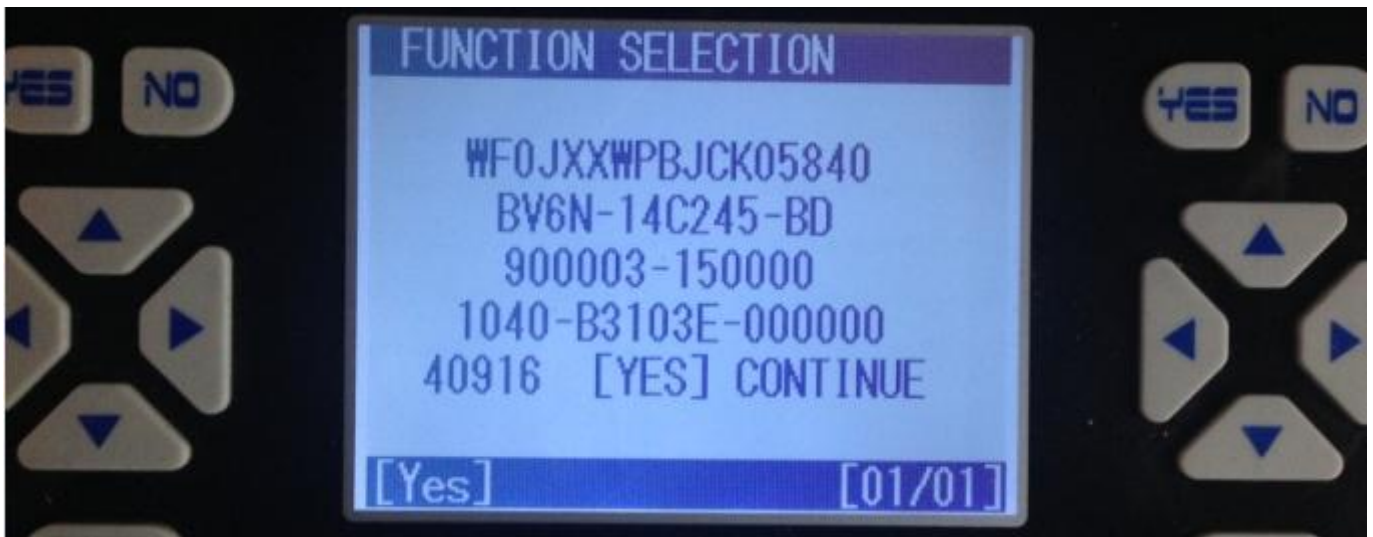




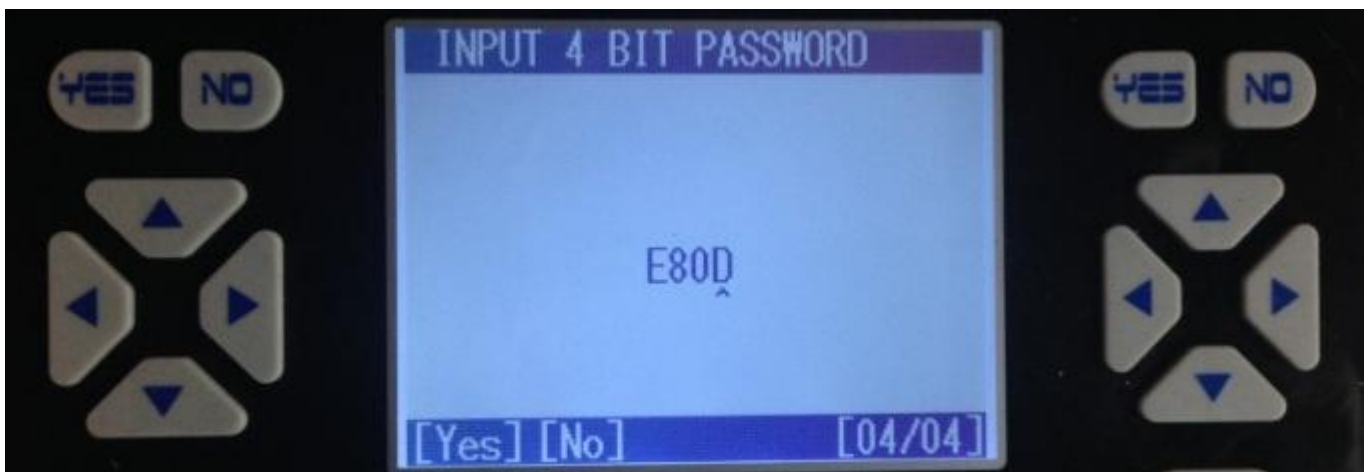
When you see the code calculated sign in the process, the code means can be found and used.



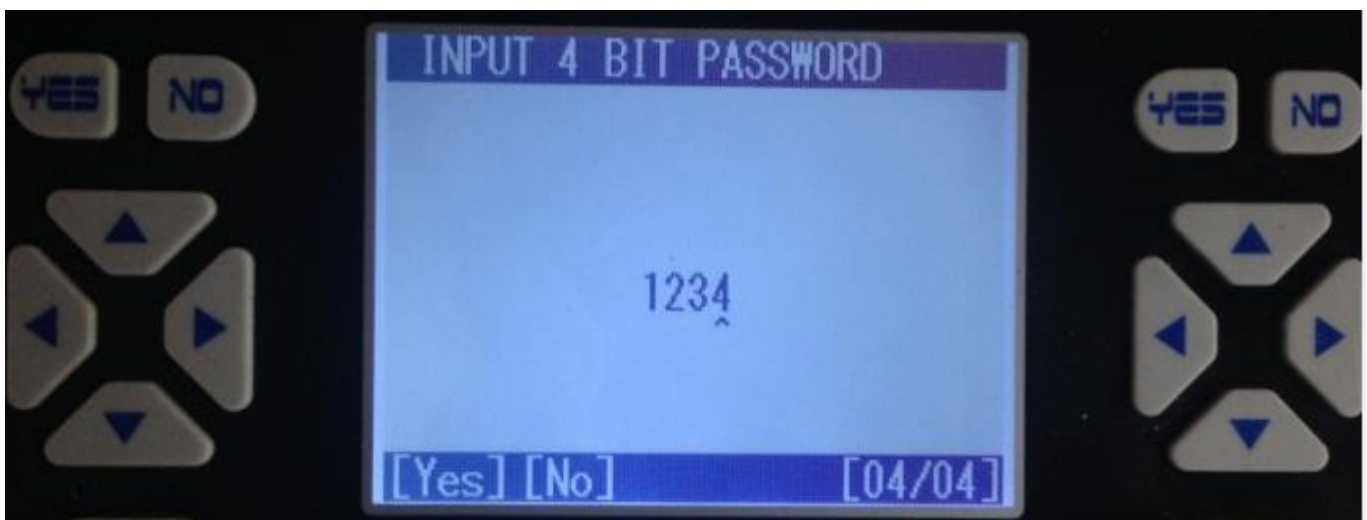
The Last Step :



CORRECT CODE : E8 0D



The operation was successful



INCORRECT CODE: 1234



These codes are kept in the server for 2 days.

Therefore; after you find the code by connect the vehicle, you can calculate for 2 days.